



Richard Fleischner  
Selected Projects: 1967-2012

R. Fleischner, Dug Steps, ca.1967, destroyed

Approx. 46" × 33" × 94", Rhode Island



R. Fleischner, Hay Line (Study of a Line Describing the Axis of a Field), 1971  
Baled hay, temporary installation, 18" × 15" × 355', Rehoboth, Massachusetts





R. Fleischner, Hay Maze, 1971

Baled hay, temporary construction,  $4' \times 6'' \times 10' \times 100'$ , Rehoboth, Massachusetts



R. Fleischner, Hay Interior, 1971

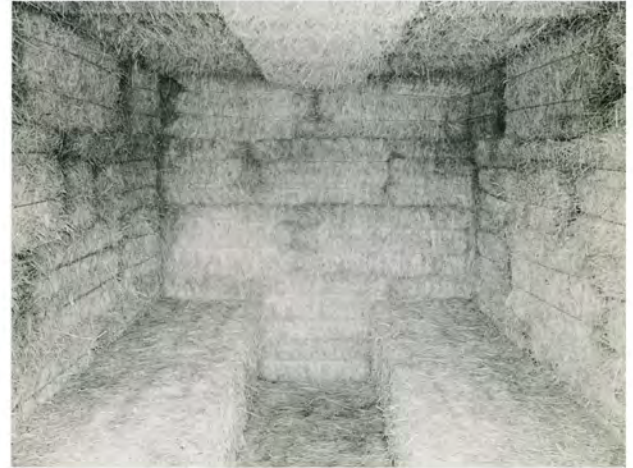
Baled hay and reinforcing wood structure, temporary construction, 7' x 7' x 10' 10" interior dimensions, Rehoboth, Massachusetts



1.



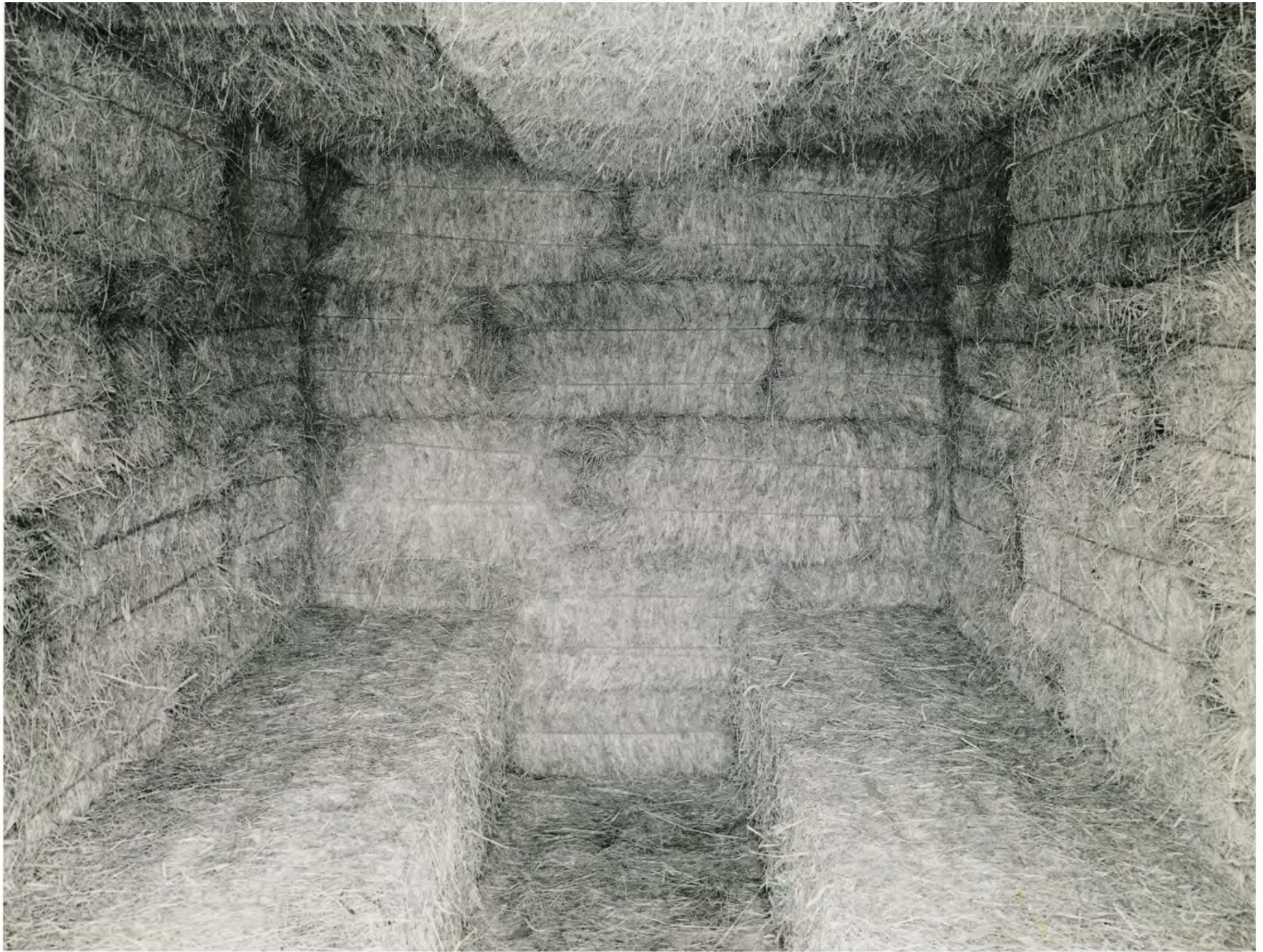
2.



3.

1. Exterior view 2. View looking out 3. View looking in

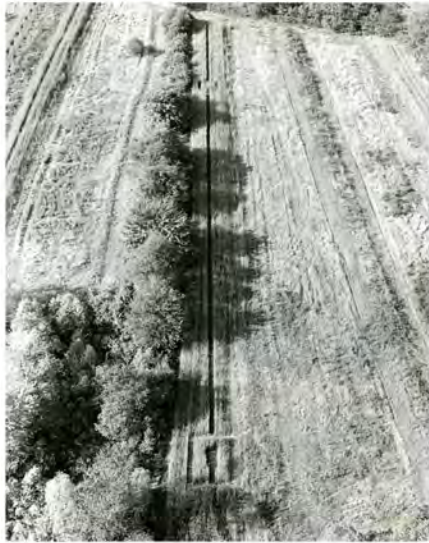






R. Fleischner, Bluff, 1972

Planted Sudan grass, temporary project, 8' × 45' × 400' × 400', Rehoboth, Massachusetts



1.



2.



3.

1. Aerial view 2. Long corridor 3. View from interior space



R. Fleischner, Tufa Maze, 1973

Tufa stone, Rockefeller Collection, 4'6" × 15'4" × 17', Pocanto Hills, New York





R. Fleischner, Sod Maze, 1974

Sod over earth, 18' × 142', Monumenta, Chateau-Sur-Mer, Newport, Rhode Island.



1.



2.



3.

1. Plan, graphite on white tissue, 10 ¼" × 9 ½" 2. Aerial view 3. General view





R. Fleischner, Floating Square, 1977, destroyed

Sod and earth, 15" x 110' x 110', Documenta 6, Kassel, Germany





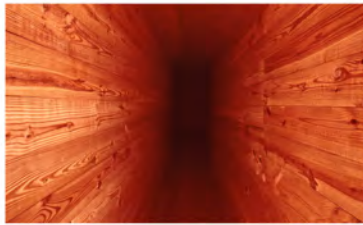


R. Fleischner, Wood Interior, 1976, destroyed

Native sawn spruce, hemlock and pine. 12' × 29' × 29', Artpark, Lewiston, New York



1.



2.



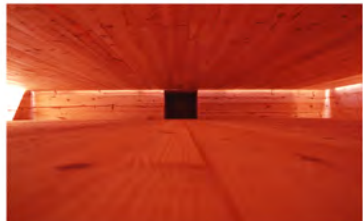
3.



4.



5.



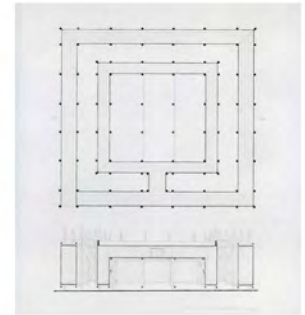
6.



7.

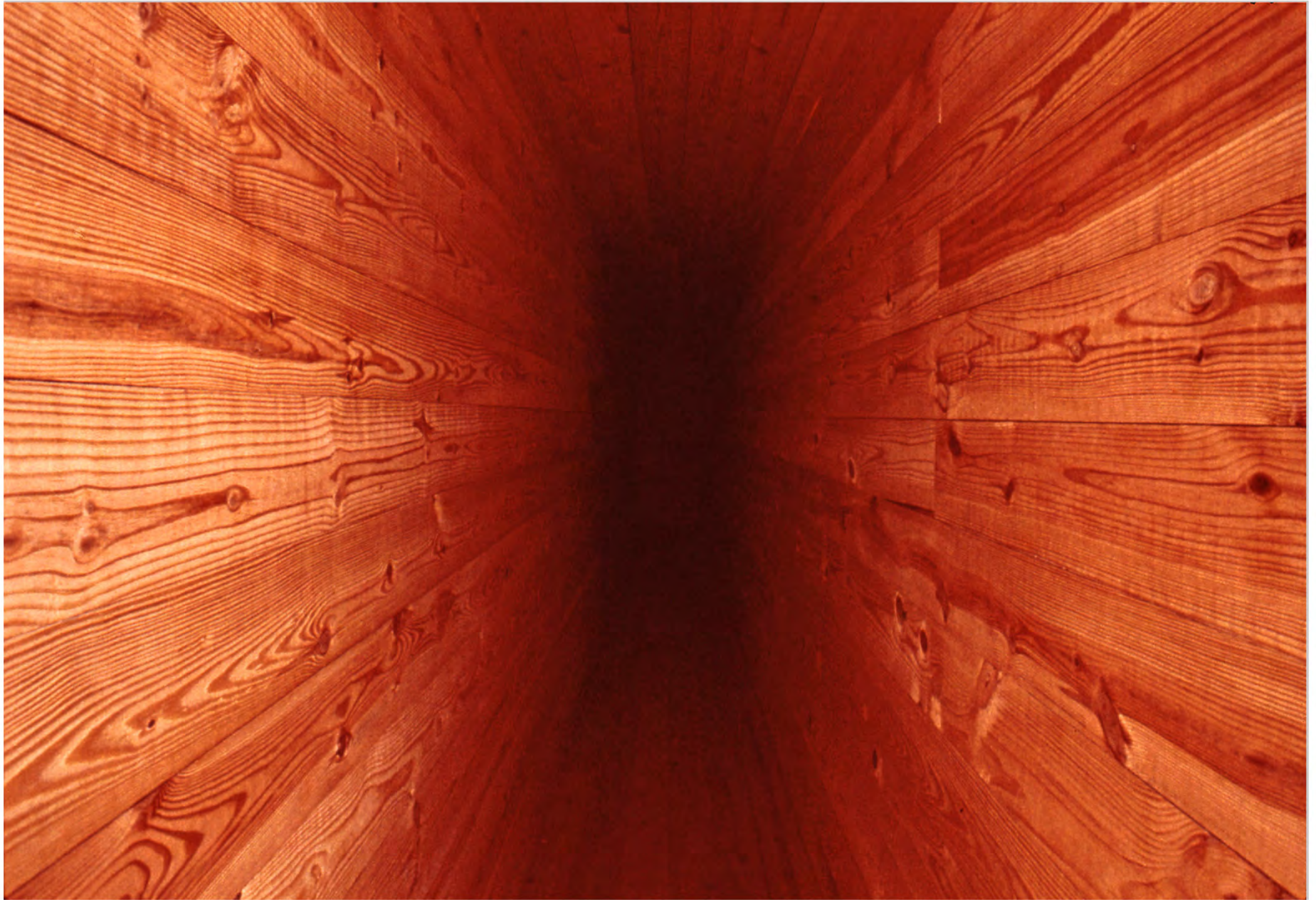


8.



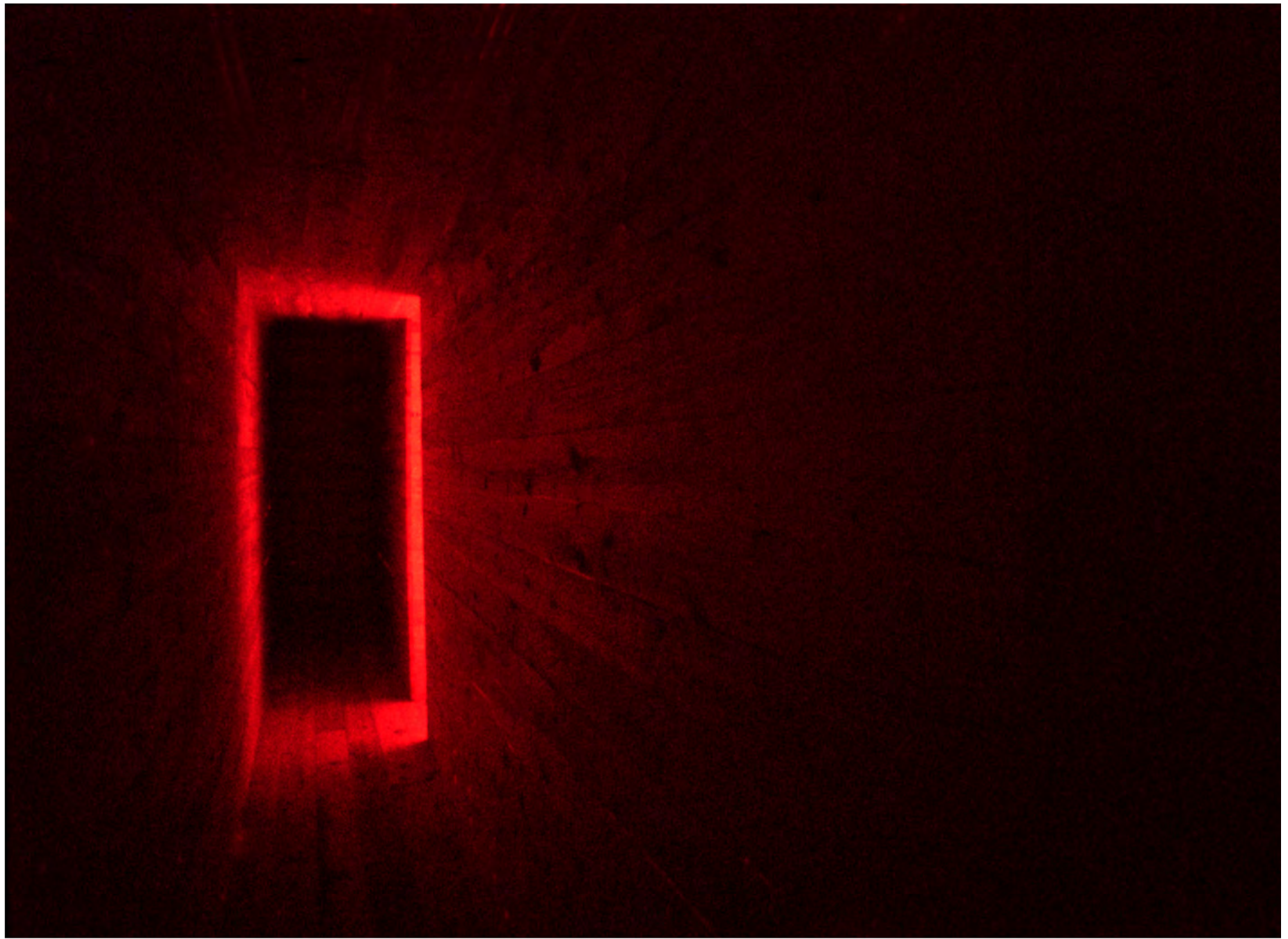
9.

1. Exterior 2. View into first corridor 3. View out of first corridor 4. View from end of second corridor to end of first corridor  
5. Fourth corridor with entryway 6. Interior chamber 7. Detail: light entry 8. Interior chamber 9. Plan and section, graphite on vellum, 26 1/2" × 24 1/2"

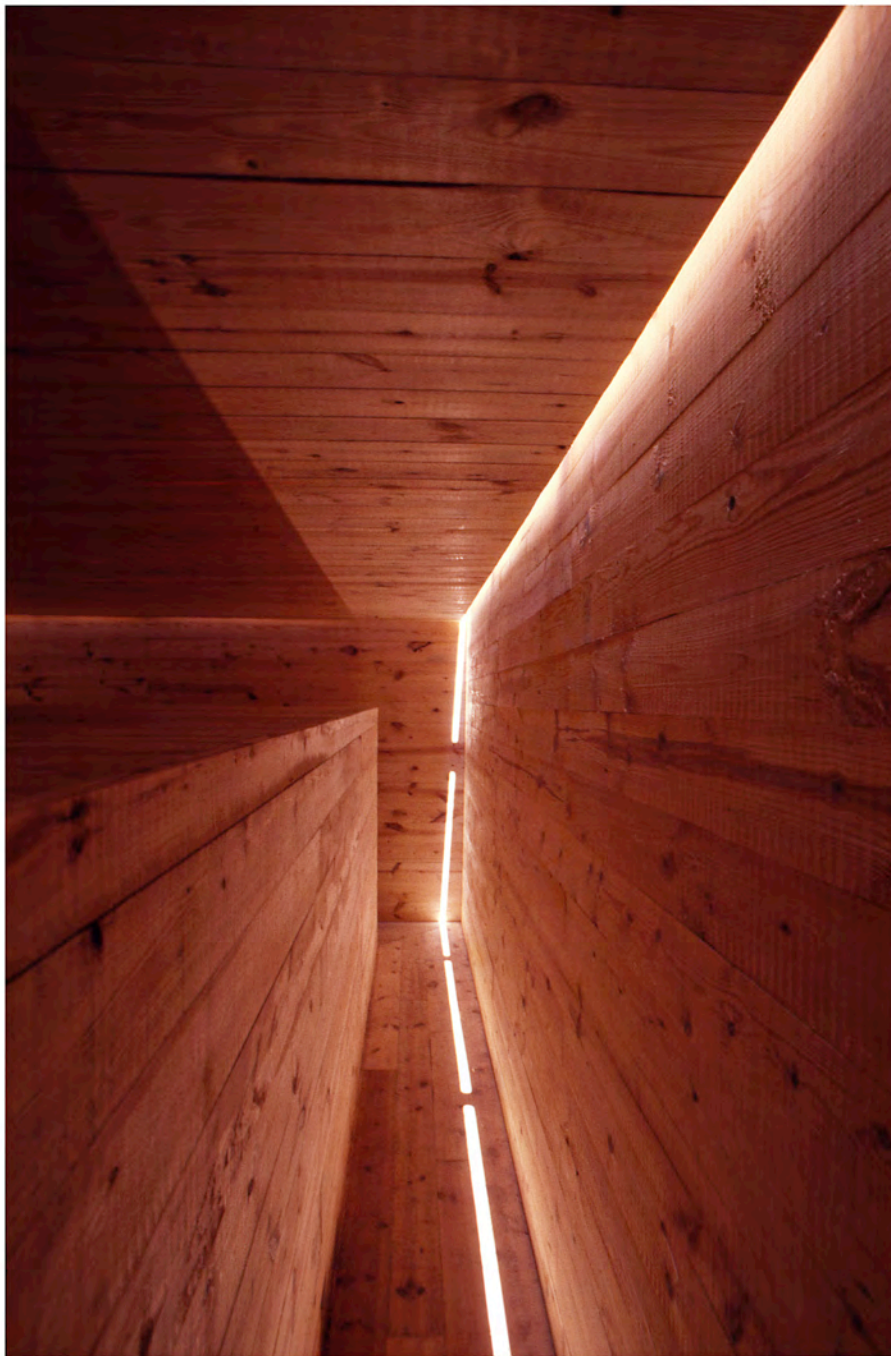




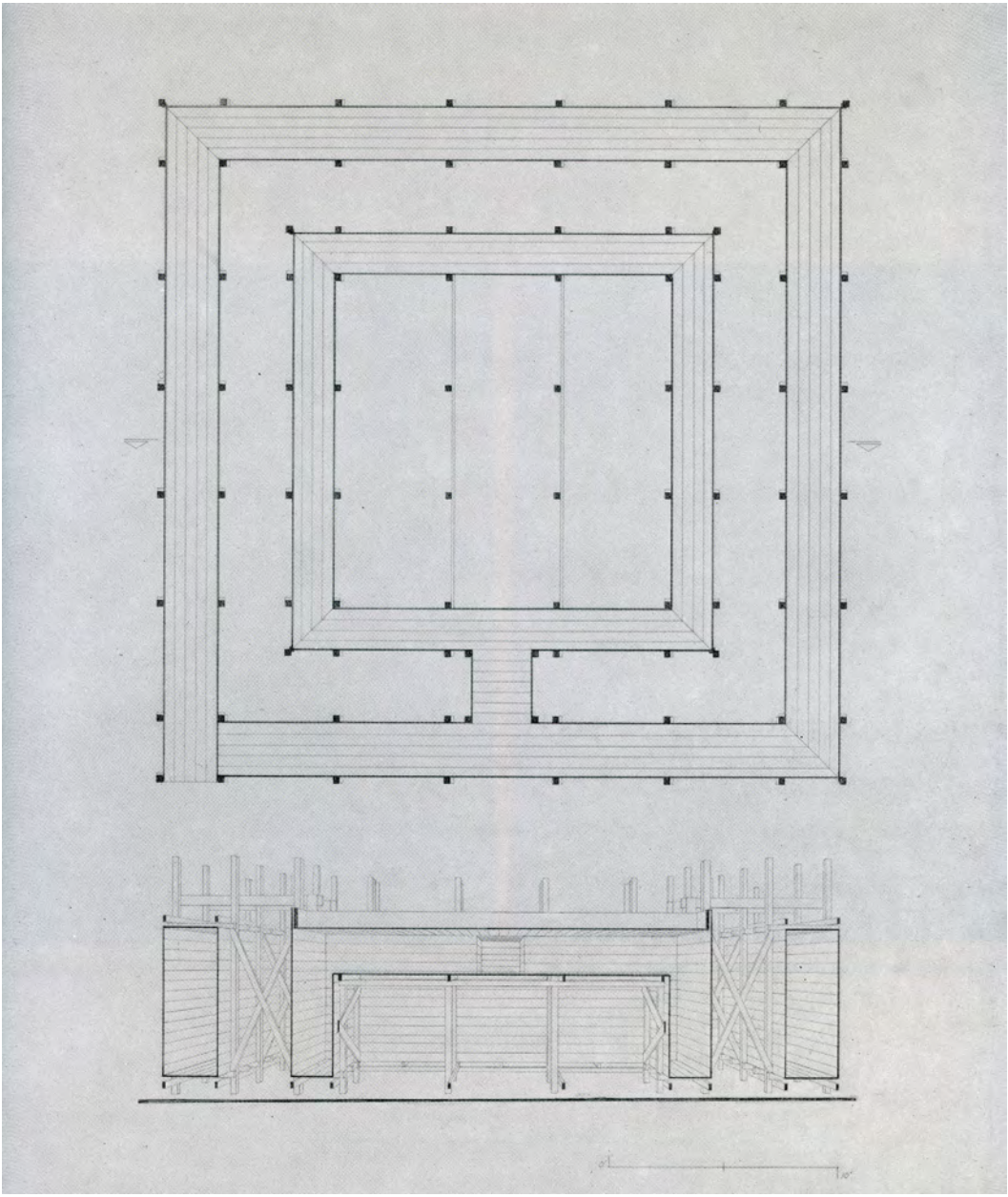


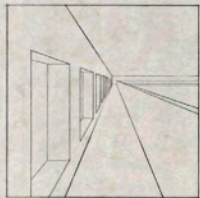
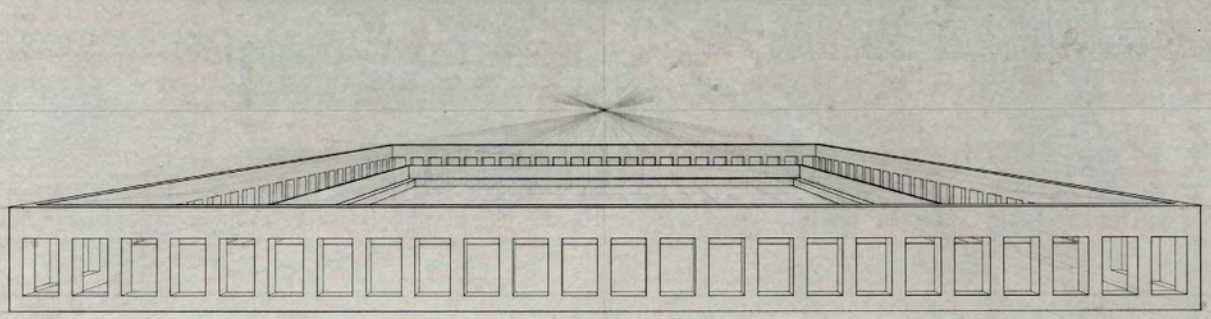




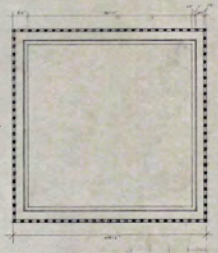
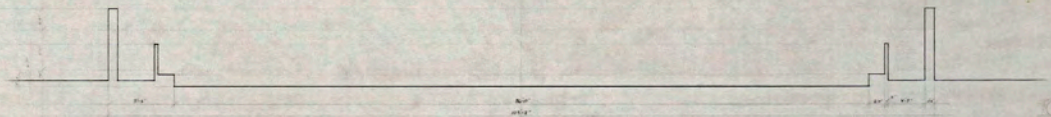




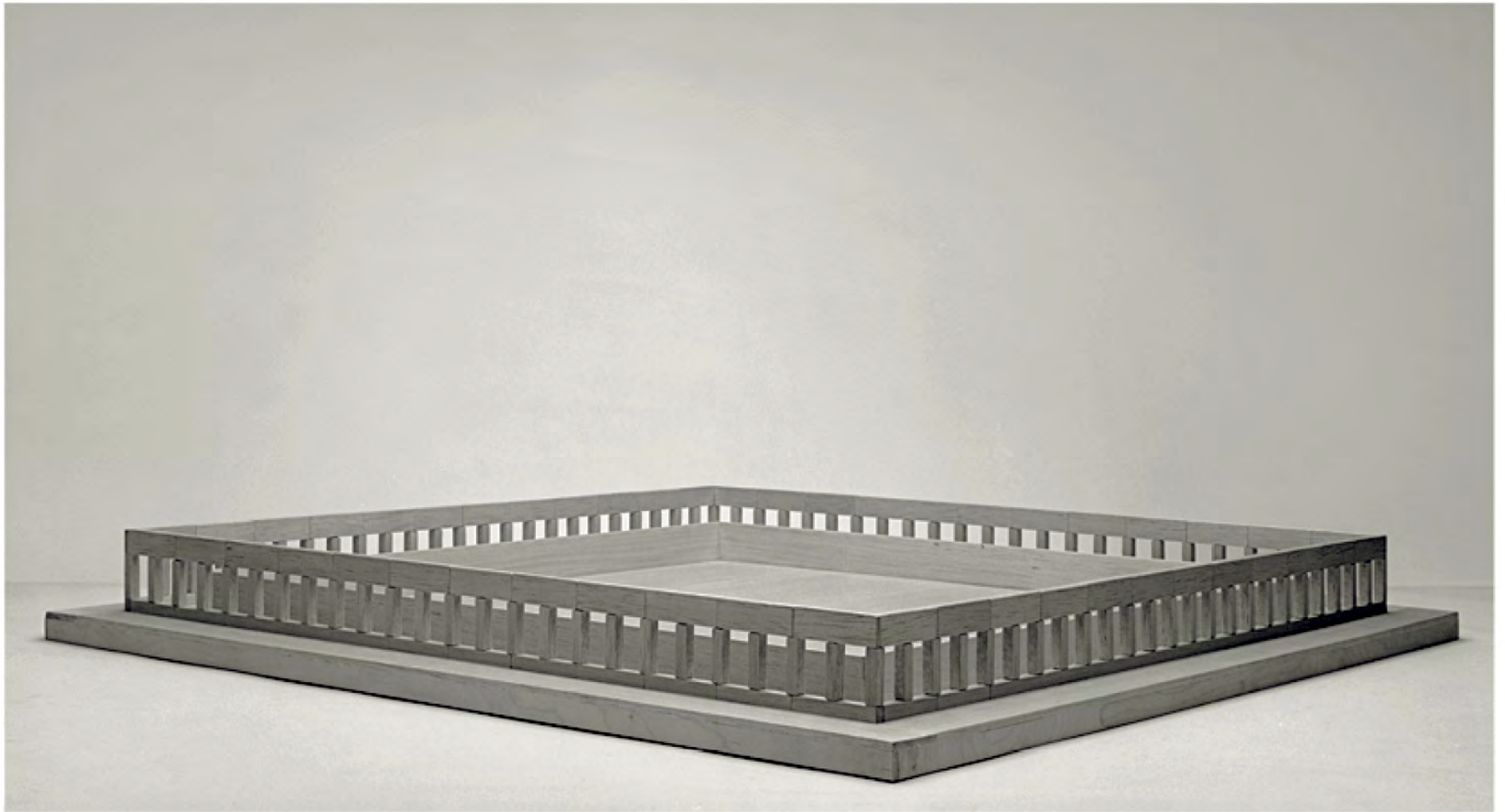




SECTION OF THE PORCH / INTERIOR COURT

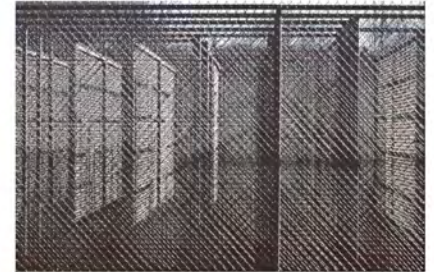


*R. Smith* 1878

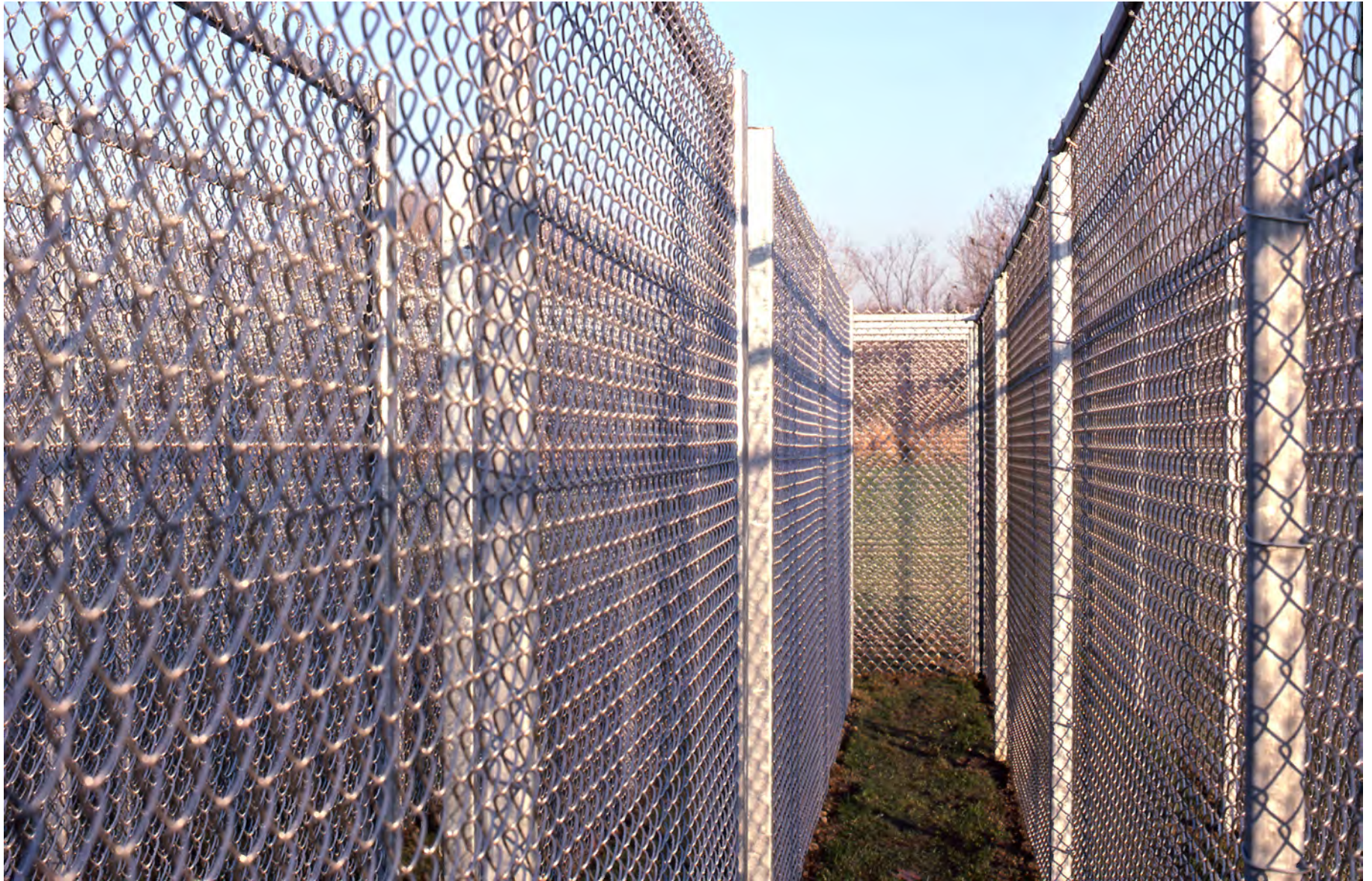


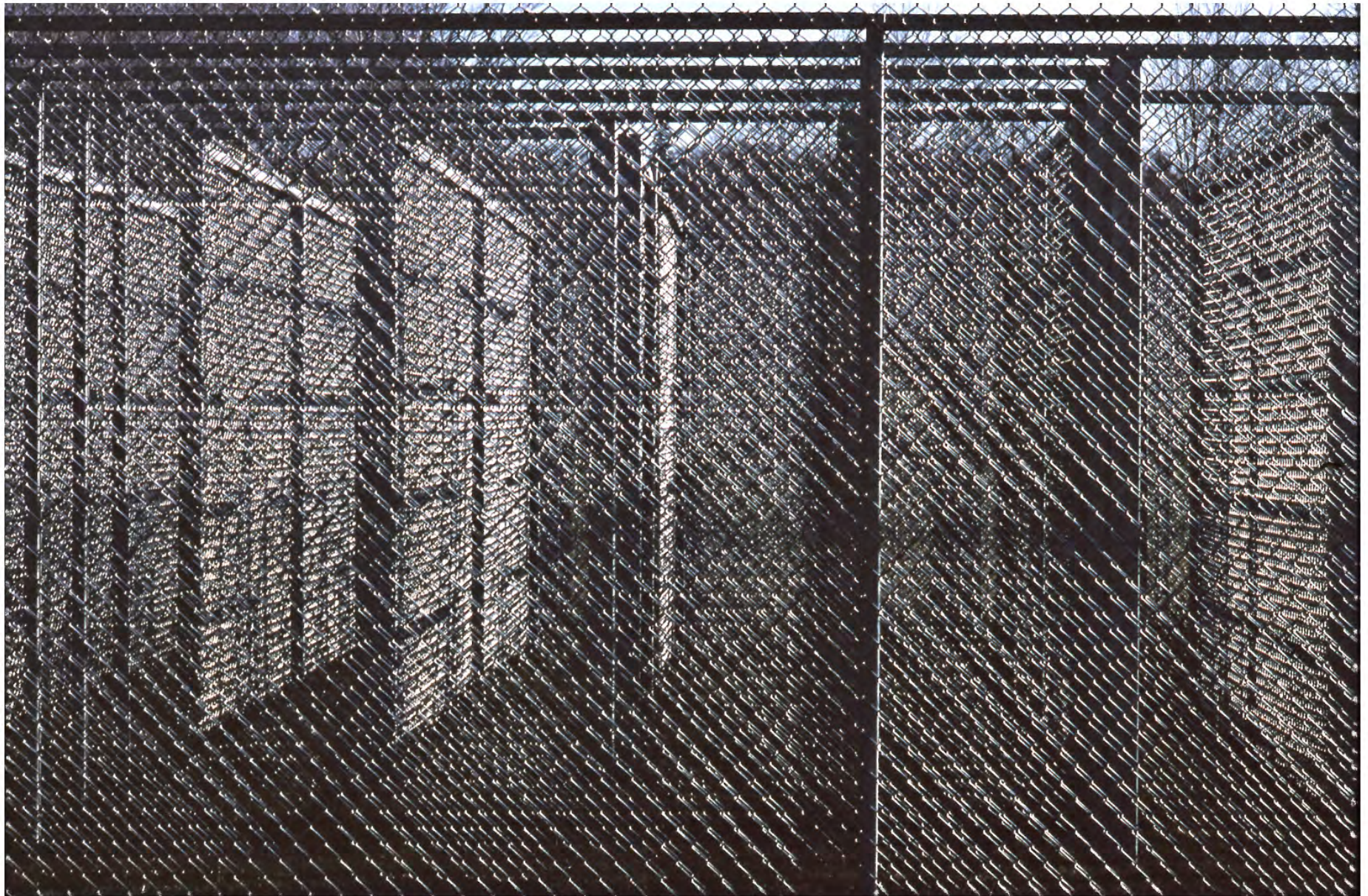
R. Fleischner, Chain Link Maze, 1978–1979, destroyed

Galvanized chain link fencing, 8' × 61' × 61', University of Massachusetts, Amherst, Massachusetts









R. Fleischner, Wood Interior, 1980

Temporary construction, 17' x 34' x 65', Museum of Art, Rhode Island School of Design, Providence, Rhode Island







R. Fleischner, Fence Covered Fence, 1980

Wood, 17' × 113' × 300', temporary construction for 1980 Winter Olympics, Lake Placid, New York

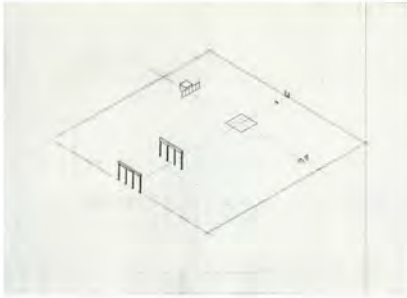






R. Fleischner, Baltimore Project, 1980

Ten steel and granite elements on a two-acre site, Woodlawn, Maryland



1.



2.



3.



4.



5.



6.



7.



8.

1. Axonometric plan, sepia diazo print,  $29 \frac{3}{4}'' \times 43 \frac{1}{2}''$  2. Detail: column walls 3. Primary axis between building and woods, approx. 350' 4. Diagonal view toward steel plane  
5. Steel plane,  $12' \times 30'$  6. Secondary axis from granite cube, steel plane, horizontal plane 7. Continued secondary axis from horizontal plane toward implied cubes  
8. Secondary axis from implied cubes toward steel plane









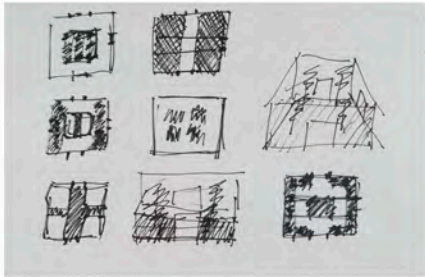




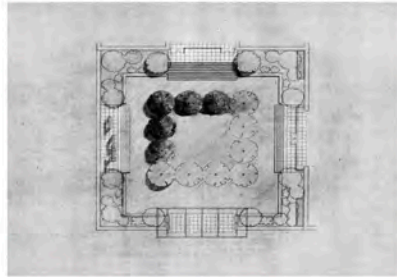


R. Fleischner, Dallas Museum of Art, Courtyard Project, 1981-83, restored 2009-10

Limestone, marble, wood and plantings, Edward Larrabee Barnes, Architect, 115' x 115', Dallas, Texas



1.



2.



3.



4.



5.



6.



7.



8.

1. Concept sketch, 8 1/2" x 11" 2. Plan, colored pencil on vellum, 36" x 42" 3. Aerial view of original courtyard 4. View from museum  
5. Overall detail 6. Detail: marble block construction from trees 7. Detail: bench and perimeter plantings 8. Overall view



R. Fleischner, Becton Dickinson Project, 1985-87

Exterior garden terrace area with stepped grass plane and inlay in the woods. Work included all aspects of the site. Franklin Lakes, New Jersey.



1.



2.



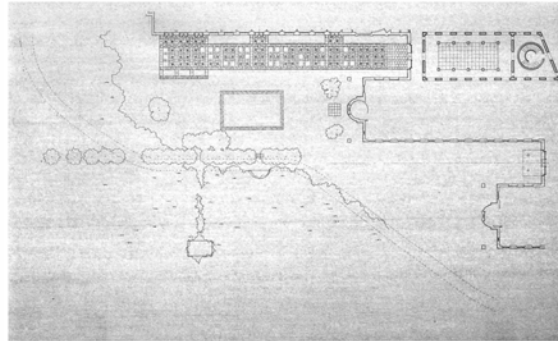
3.



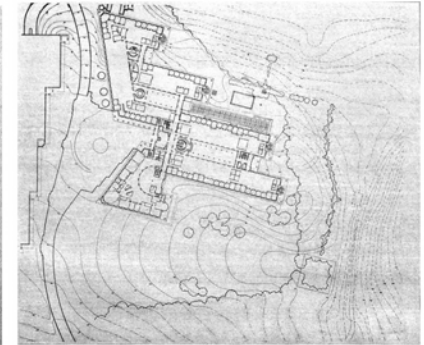
4.



5.



6.



7.

1. Terrace area with stepped green 2. Terrace area 3. Stepped green 4. View from terrace toward woods 5. Granite inlay with elements in woods  
6. Project site plan, graphite on vellum, 36 1/2" x 53 3/8" 7. Overall site plan, graphite on vellum, 41" x 59"









R. Fleischner, St. Louis Project, 1988–89

Five constructed rubble stone elements along a 600' tree-lined axis, Laumeier Sculpture Park, St. Louis, Missouri.



1.



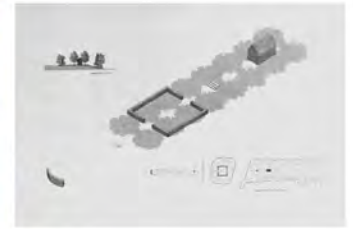
2.



3.

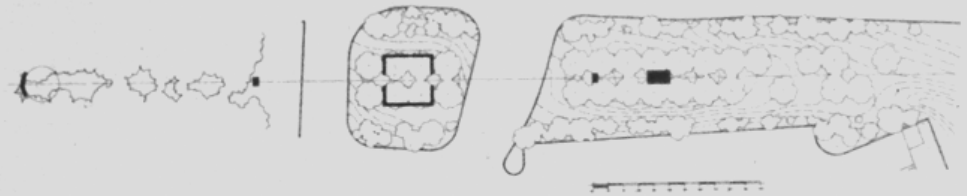
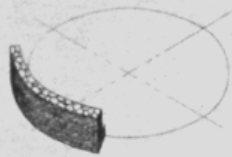
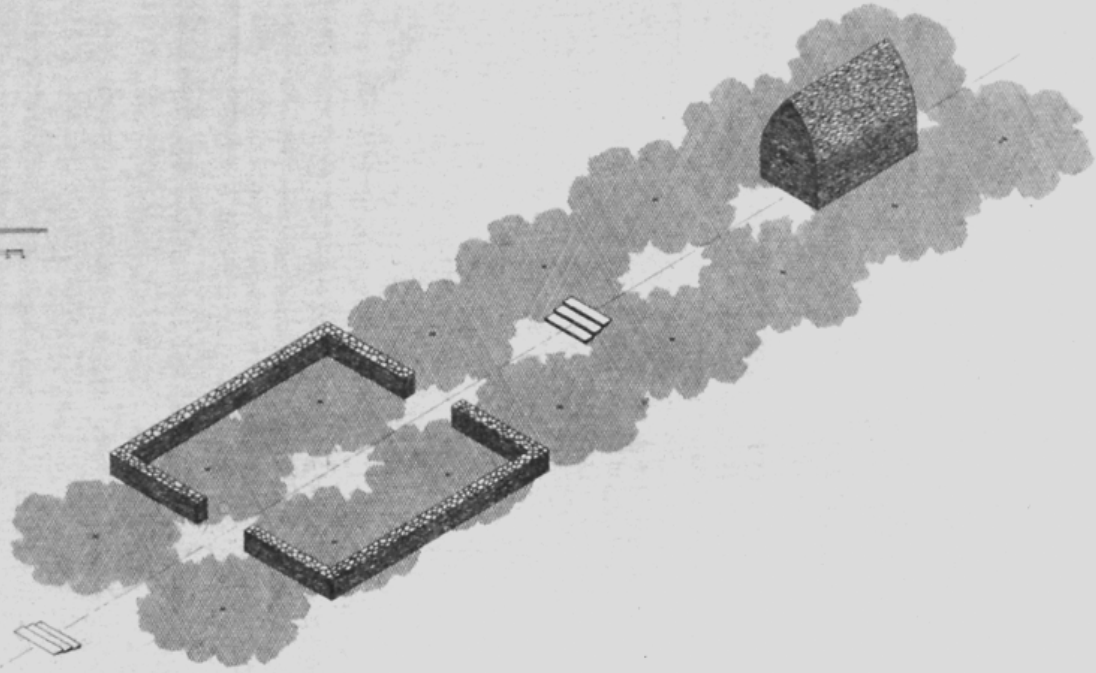


4.



5.

1. Bench element    2. View from behind bench along complete axis    3. View through stone enclosure toward final element    4. Final element, constructed after the Gallarus Oratory in County Kerry, Ireland    5. Axonometric drawing, 36 1/2" x 63 1/8"



RICHARD FLEISHER

SAVOY PARK PROJECT

1928





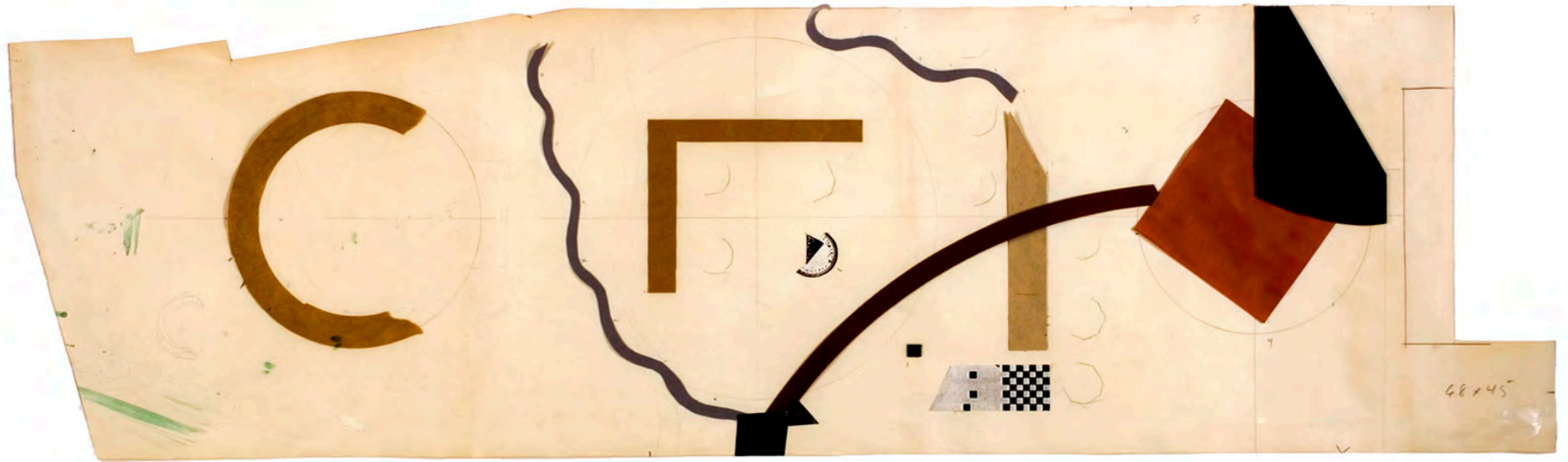


R. Fleischer, St. Paul Project East Capital Plaza, 1988–91

Park area of the Minnesota Judicial Building and facing the State Capital. Project consists of large amphitheatre, granite elements and constructions, colonnade, specimen trees, lighting and furniture. Leonard Parker Associates, Inc., Architects of Record, St. Paul, Minnesota.



1. Bronze entryway lamps with granite bases and inlaid walkways    2. Entry lamp bronze, granite and glass    3. Granite inlays, shaped columns, bronze and teak seating at dedicatory wall  
 4. Granite promenade and elements with bronze and teak furniture    5. Judicial axis paving with granite colonnade, height 12'    6. Study for judicial axis paving, graphite on vellum, 9 1/2" x 14 1/2"  
 7. Judicial axis paving with large curved granite bench    8. View from circular (7' radius) granite bench and inlay toward amphitheatre    9. & 10. Granite promenade and columns  
 11. Preliminary collage, 15 3/4" x 54 1/2"















THE PUBLIC POWER OF THE STATE  
IS RESTED IN A SUPREME COURT  
A COURT OF APPEALS  
A COURT OF CHIEF  
JUSTICE AND OTHER COURTS  
IN THE COUNTRY AND TERRITORIES

R. Fleischner, Irish Hunger Memorial Proposal, 2000, Vesey Green, New York City

Project to include mapped elements of Ireland & west coast of England forming a 40-foot high vertical memorial of stone following the contours of the Irish coastline, excavated to form an amphitheater representing the gutting of Ireland because of the famine. Low stone construction of the west coast of England placed in geographic scale to Ireland serves as the witness bench. Memorial to be set on a field of cobblestone covering entire site and representing the Atlantic Ocean.



1.

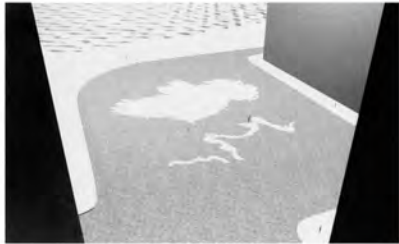
2.

3.

4.

5.

6.



7.

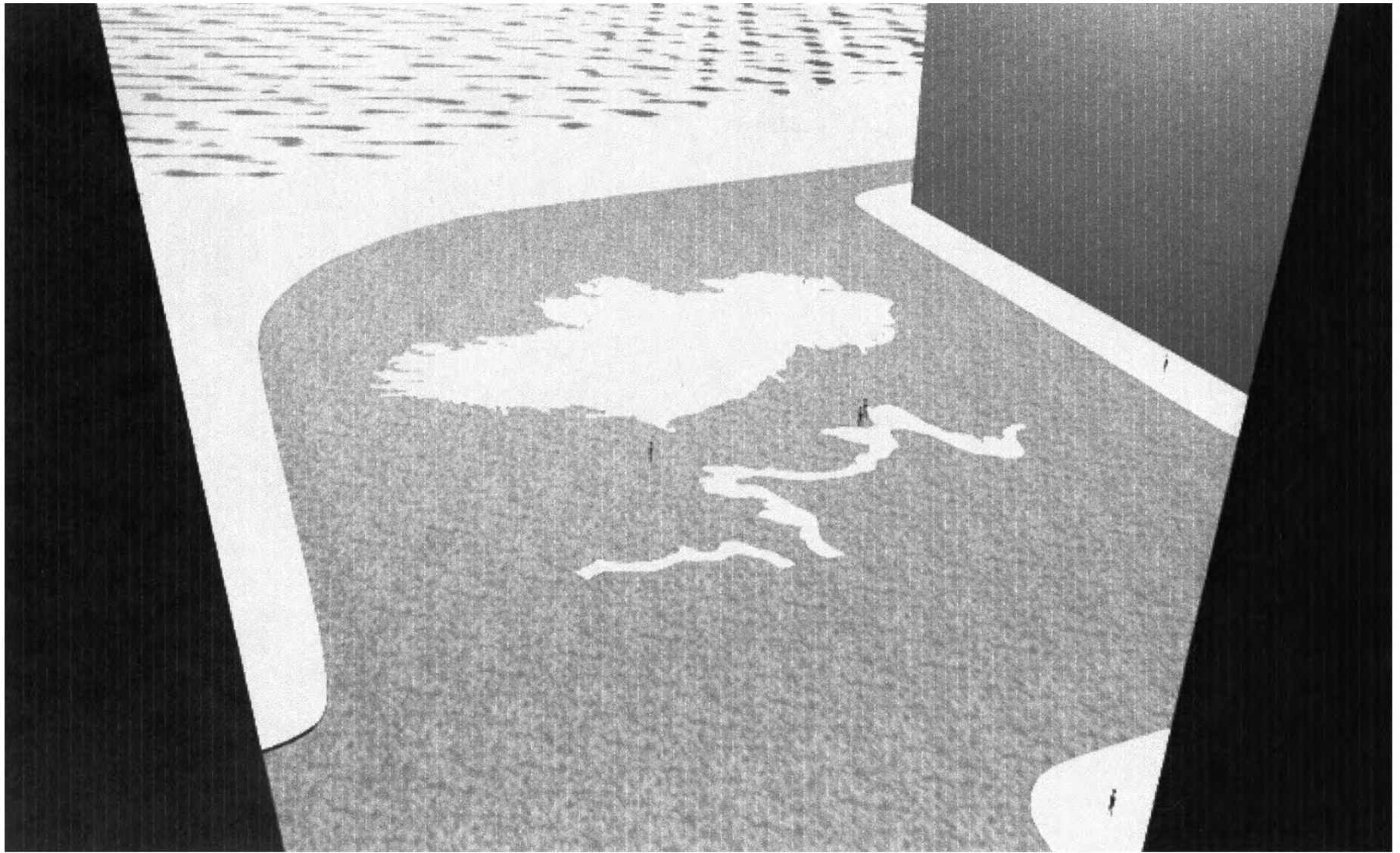
8.

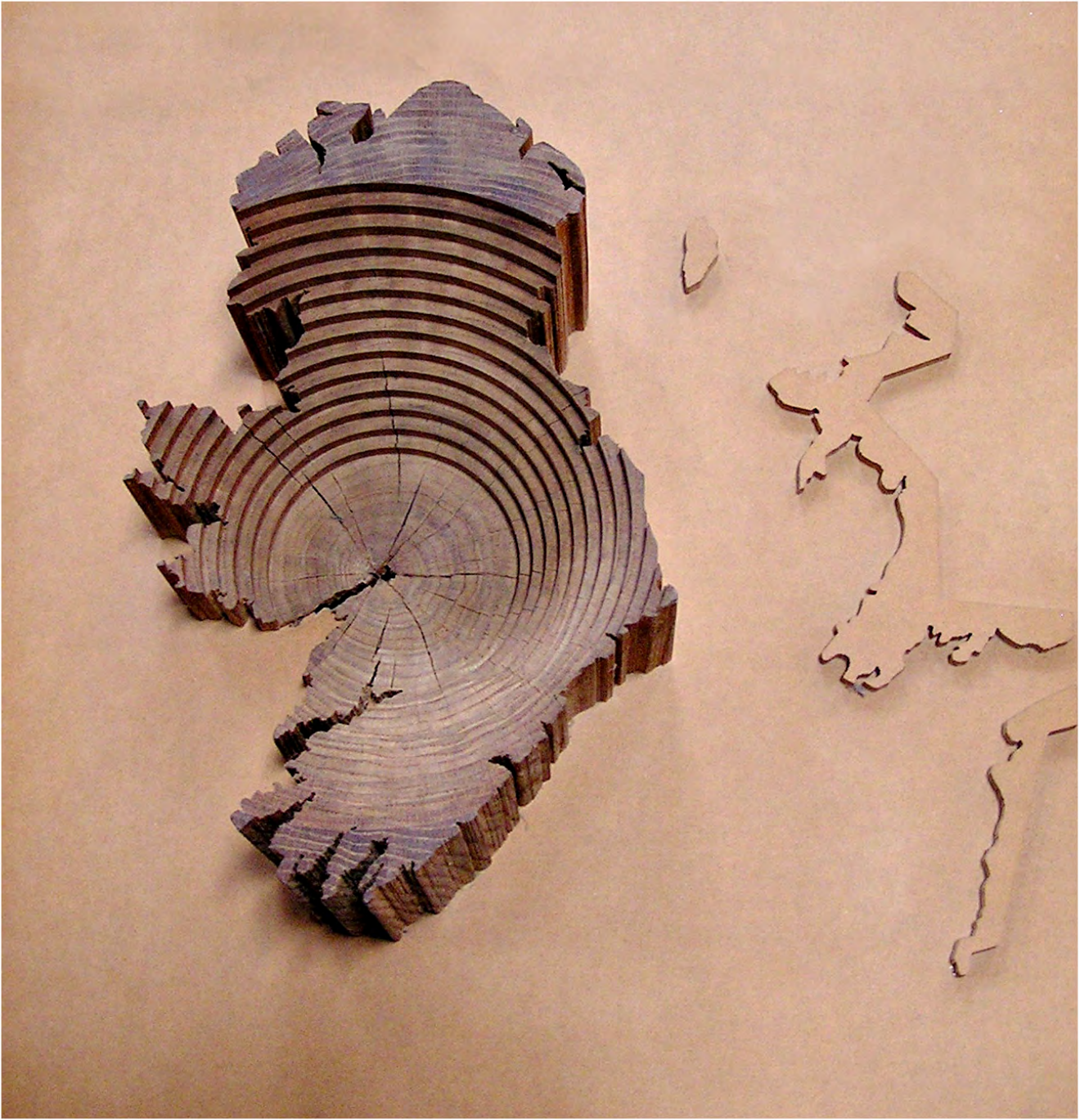
9.

10.

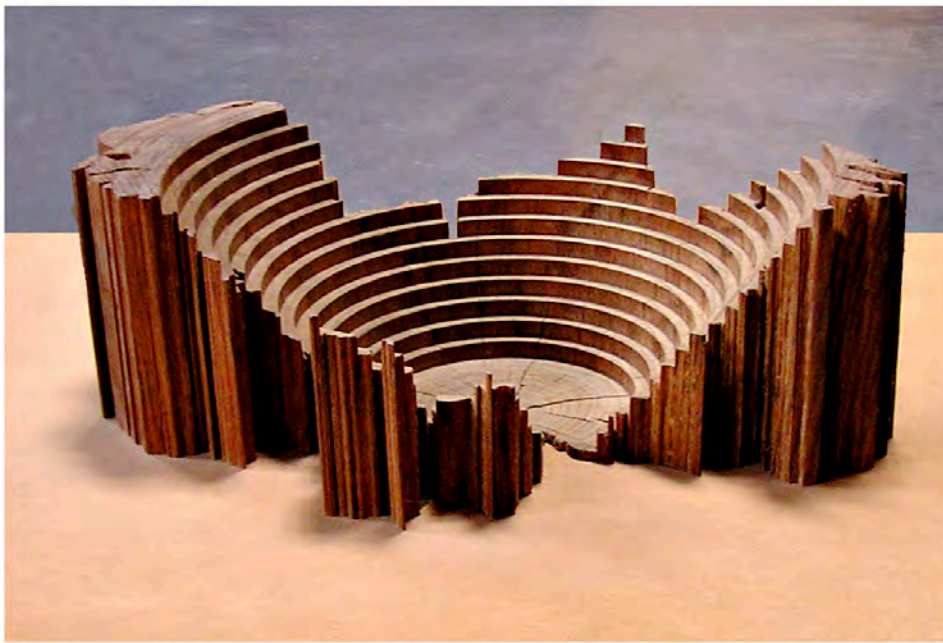
11.

1. Aerial view of site    2. & 3. Wooden model of memorial    4. Views looking east    5. West, south & north elevations    6. Limestone construction sample  
7. Perspective plan including Vesey Green memorial and Hudson River    8. Rendered site plan    9. & 10. Reference images    11. Coastline of Ireland









R. Fleischner, Marsh & McLennan Companies, September 11, 2001 Memorial, 2002–2003

Memorial for 355 employees lost on 9/11/2001, located at the north end of the public park adjacent to Marsh & McLennan's headquarters at 1166 Avenue of the Americas, between 45th and 46th Streets. Elements consist of a pair of bronze monoliths separated to reveal a bronze screen behind them and, in turn, a translucent glass dedicatory wall – bearing each individual's name and signature – beyond. From within the park these elements provide a buffer against the street and a sense of containment for the intervening area. Sheltered in the open area, on a broad plane surrounded by dense plantings, is a massive granite bench, addressing both the dedicatory wall and a mature grove of trees opposite. Project includes all aspects of the 73' x 83' area. New York City.



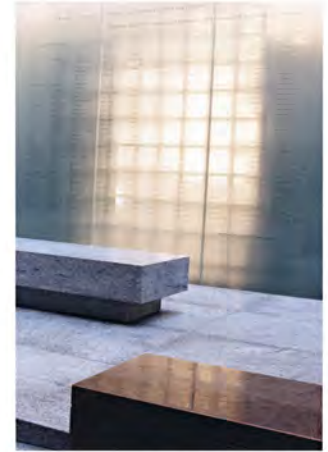
1.



2.



3.



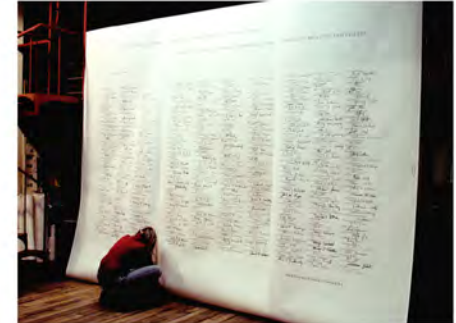
4.



5.



6.



7.

1. Southern view from 45th Street 2. Southwest view from 45th Street 3. Northeast view from interior 4. Detail of bench and dedicatory wall  
5. Detail of dedicatory wall with names and signatures 6. Northern view through grove of trees to bench and glass dedicatory wall  
7. Full scale layout of for laminated glass with names and signatures of victims



OUR LOST COLLEAGUES ARE ABOVE ALL YOUR ADORED CHILDREN AND PARENTS,  
HUSBANDS AND WIVES, SISTERS AND BROTHERS, YOUR CHERISHED RELATIVES AND FRIENDS

SEPTEMBER 11, 2001

THE WALL OF NAMES is a memorial wall for the victims of the September 11 attacks. It is a large, rectangular wall made of polished granite, with the names of the victims engraved on it. The wall is divided into three sections by vertical lines. The top section contains the date "SEPTEMBER 11, 2001". The middle section contains the names of the victims, arranged in columns. The bottom section contains the names of the victims' families and friends. The wall is set against a background of a large window with a grid pattern, which allows natural light to illuminate the names.

MARSH & MCLENNAN COMPANIES





R. Fleischner / Malcolm Grear Designers, Master Plan Proposal for Buffalo Niagara Medical Campus, 2004

Proposed to create a cohesive whole within a preexisting and expanding (100 acre-plus) medical campus lacking in any sense of overall organization. Proposal superceded the disciplinary boundaries that have conventionally divided art, landscape, architecture, design and events to create an integrated community.



1.



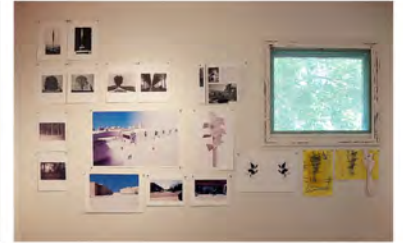
2.



3.



4.

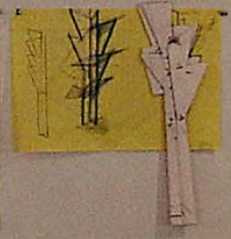


5.

1.—5. Presentation details





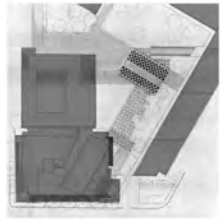


R. Fleischner, MIT Project, 1980-85

Granite inlays, granite stairs, planting, furniture, lighting and all aspects of the 2 ½ acre site. Cambridge, Massachusetts

R. Fleischner, MIT Project, Lower Courtyard, 2008-10

Cast concrete, paving, landscaping, lighting, and all aspects of the site. Cambridge, Massachusetts



1.



2.



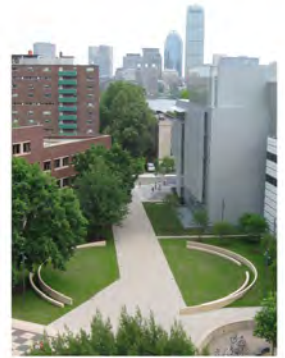
3.



4.



5.



6.

1. 1985-87 Courtyard Project plan with overlay of the Media Lab expansion by Architect Fumihiko Maki, completed 2010 2. & 3. Original MIT Project details completed 1980-85.

View of Sculpture Court and all outside areas between the Wiesner Building, I.M. Pei Architect, and the Health Services Building, Romaldo Giurgola, Architect.

4. Overall view looking South

5. Detail Eastern portion

6. Ariel View







R. Fleischer; Courtyard Project For The Balsillie School At The Center For International Governance Innovation, 2012

Site Specific Project for inner courtyard within new Balsillie School designed by KPMB Architects. This courtyard includes a circular Terrazzo bench surrounded by Mara and Hope Bay Stone inlays, a galvanized steel column, copper electroplated aluminum knee wall with a single Terrazzo seating element as well as all landscaping. Project includes all aspects of the 118' x 145' area. Waterloo, Ontario, Canada.



1.



2.



3.



4.



5.

1. Map of the World 2. World Map with Latitude/Longitude Overlay with Courtyard Layout 3. Inlay Copper Marker with Latitude/Longitude 4. Completed View Facing South 5. Aerial View







